

METHODIST GIRLS' SCHOOL
Founded in 1887



PRIMARY 4
SCIENCE
WEIGHTED ASSESSMENT 1

Total Time for Paper: 40 min

INSTRUCTIONS TO CANDIDATES

Do not turn over this page until you are told to do so.

Follow all instructions carefully.

Answer all questions.

Name: _____ ()

Class: Primary 4. _____

Date : _____

Parent's signature: _____

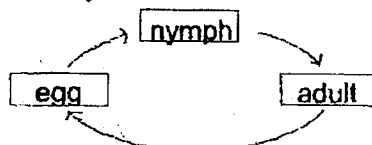
Section A	14
Section B	11
Total	25

This paper consists of 8 printed pages including this page.

Section A

For each question from 1 to 7, four options are given. One of them is the correct answer. Make your choice (1, 2, 3 or 4) and write in the bracket provided. [14 marks]

- 1 The diagram shows the life cycle of an animal.



Which animal is likely to have the life cycle as shown above?

- (1) frog
- (2) chicken
- (3) butterfly
- (4) grasshopper

()

- 2 Which animal has the pupa stage in its life cycle?

- (1) frog
- (2) chicken
- (3) cockroach
- (4) mealworm beetle

()

- 3 Jason prepared four set-ups, J, K, L and M as shown in the table below.

Set-up	Type of seed	Number of seeds	Temperature (°C)	Time taken for roots to appear (days)
J	Seed W	10	40	8
K	Seed X	5	30	5
L	Seed W	10	30	7
M	Seed X	10	20	6

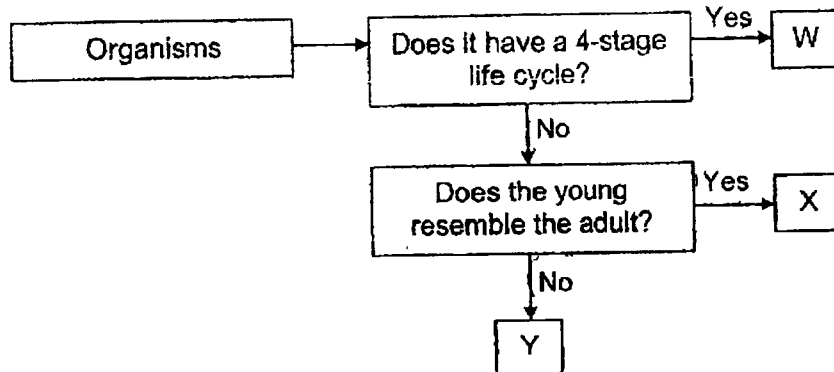
He wants to find out if temperature affects how fast the seeds grow. Which two set-ups should he use?

- (1) J and K
- (2) J and L
- (3) K and L
- (4) K and M

()

(Go on to the next page)

- 4 Study the flow chart below.



Which of the following represents organisms W, X and Y?

	W	X	Y
(1)	butterfly	frog	cockroach
(2)	butterfly	cockroach	frog
(3)	ladybird beetle	cockroach	mosquito
(4)	ladybird beetle	grasshopper	mosquito

- 5 The table below shows the characteristics of animals A and B.

Characteristics	Animal	
	A	B
Has a pupal stage	No	Yes
Has wings in adult stage	No	Yes
Gives birth to young alive	Yes	No

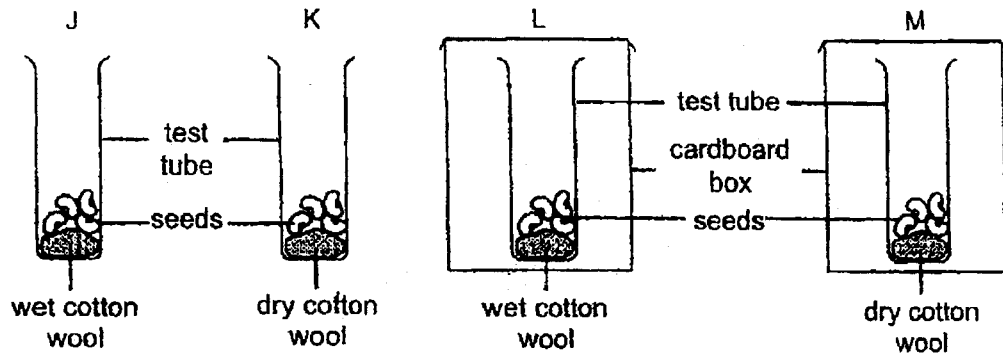
Based on the table above, which one of the following statements is correct?

- (1) Both animals can fly at their young stage.
- (2) The young of A looks different from the adult.
- (3) Animal A gives birth to young alive while animal B lays eggs.
- (4) Animal A has 4 stages in its life cycle while animal B has 3 stages in its life

()

(Go on to the next page)

- 6 Four set-ups were placed in a room near the window as shown below.

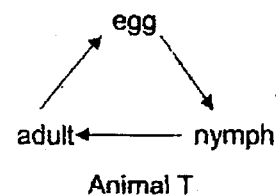
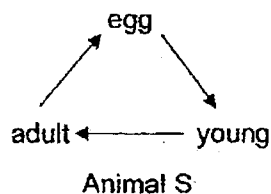


In which of the set-ups will the seeds not grow into young plants?

- (1) K and M
- (2) L and M
- (3) J, K and M
- (4) K, L and M

()

- 7 The diagrams below show the life cycles of two different animals, S and T.



Both animals S and T have _____.

- A three stages in their life cycle.
- B young that look like the adults.
- C young that moults several time.
- D adults that have wings and can fly.

- (1) A only
- (2) B only
- (3) B and D only
- (4) C and D only

()

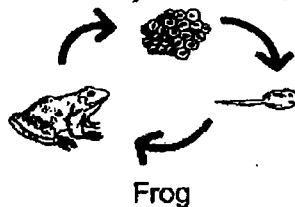
(Go on to the next page)

Section B

For questions 8, 9 and 10, write your answers in the space provided.

[11 marks]

- 8 The diagram below shows the life cycle of a frog.



- (a) Which two characteristics of living things are shown in the life cycle of the frog? [1]

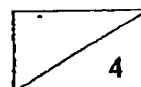
(i) _____

(ii) _____

- (b) State one difference between the number of stages in the life cycles of a frog and a butterfly. [1]

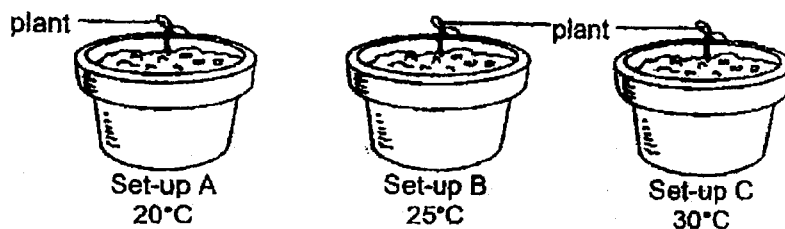
- (c) State one similarity between the life cycles of a frog and a butterfly. [1]

- (d) Explain why it is important for the frog to lay many eggs. [1]



(Go on to the next page)

- 9 Salim wanted to find out how the temperature of the surroundings affects the growth plants. He set up three containers with similar plants. He planted them in equal amounts of soil and water them with the same amount of water daily as shown below.



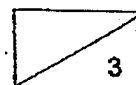
He recorded his observations after 1 week as shown in the table below.

Set-up	A	B	C
Temperature of the surroundings (°C)	20	25	30
Height of plant at the start (cm)	5	5	5
Height of plant at the end (cm)	9	16	23

- (a) State the variable Salim should change in the experiment. [1]

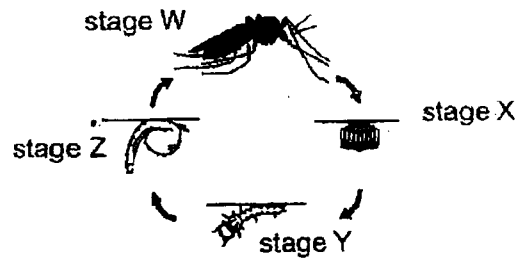
- (b) State how the height of the plant changed when the temperature of the surrounding increased. [1]

- (c) Which temperature is the least suitable for the growth of the plants? Explain your answer based on Salim's observations. [1]



(Go on to the next page)

- 10 Study the life cycle of a mosquito below.

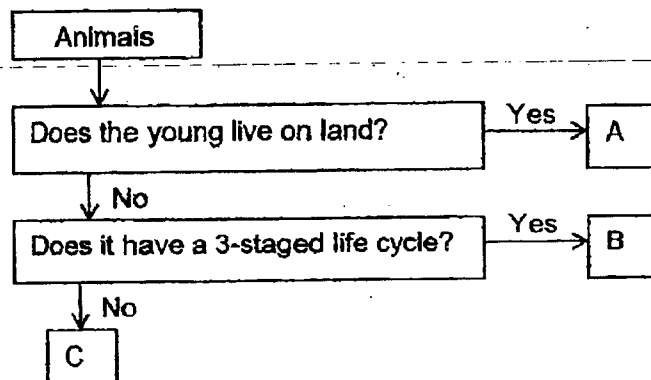


- (a) Name stage Z of the life cycle of the mosquito.

[1]

Stage Z: _____

Study the flow chart below.



- (b) Which letter A, B or C represents the mosquito?

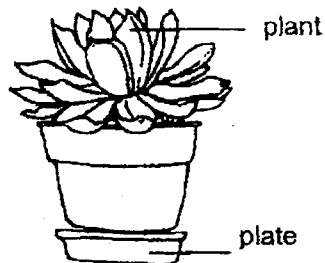
[1]

- (c) State two characteristics of the mosquito at stage Y that help it to grow into stage Z.

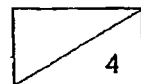
[1]

(Go on to the next page)

The Aedes mosquito spreads dengue fever in humans. Water is often collected on the plates of flower pots.



- (d) Based on the life cycle of a mosquito, explain why it is important to empty the water collected in the plate. [1]



End of paper

SCHOOL : METHODIST GIRLS' SCHOOL
LEVEL : PRIMARY 4
SUBJECT : SCIENCE
TERM : 2023 WA 1

CONTACT :

WA1

SECTION A

Q1	Q2	Q3	Q4	Q5	Q6	Q7			
4	4	2	2	3	1	1			

SECTION B

Q8)	a) (i) Living things change and grow (ii) Living things reproduce b) The life cycle of a frog has 3 stages while that of a butterfly has 4 stages c) Both life cycles start with the egg stage d) Laying many eggs increase the chance of survival and development into adult stage
Q9)	a) Temperature of the surroundings b) As the temperature of the surroundings increases, the height of the plant increases c) 20 degrees is the least suitable temperature for the growth of the plants, as the height of the plant at 20 degrees was the shortest.
Q10)	a) Stage Z: Pupa b) C c) The mosquito at stage Y eats a lot and molts several times d) By emptying the water collected in the plate, the adult mosquito will have no place to lay their eggs, so it will be harder for the mosquito to breed.